

# SODIC

## ADVENTURE PARK

# INSIDE

PG. 2

Park over view, project general information and scope of work activities.

PG. 3

VALUE company work description at the project.

PG. 4

Partners in Success

PG. 5

Real photos from the field

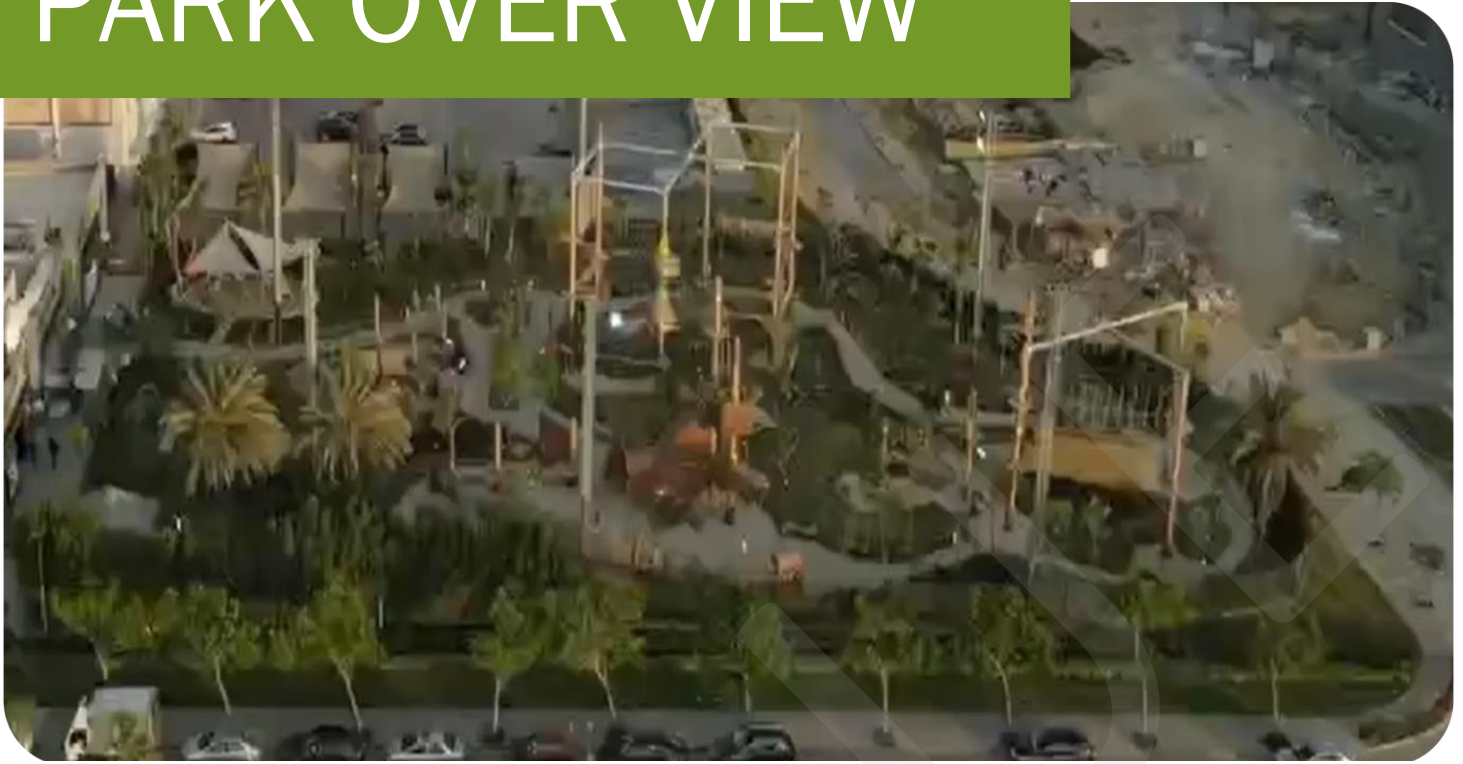


## WESTOWN HUB UNO ADVENTURE PARK

### ADVENTURE PARK PROJECT

- Client / Employer : SODIC Westtown Compund
- Project Designer : HORIZON Consulting Engineering – Dr. M Helmy
- Project Consultant : ACE Consultant – Moharram Bakhoum
- Main Contractor : Daghash Company
- Sub-Contractor : VALUE Company
- Equipment Supplier : UNO Parks Company

# PARK OVER VIEW



## PROJECT GENERAL INFORMATION

VALUE company proudly announce our latest Landscape and Hardscape contracting project in SODIC WESTOWN compound at the 6th of October – El Sheikh Zayed Area for SODIC COMPANY which is one of biggest Real Estate Developer in the Egyptian market and one of our valued clients, to the compound SODIC WESTOWN HUB.

The adventure park project landed area is almost 4000 square meter and consist of a lot of hardscape and landscape work along with its relevant Civil work activities and MEP work activities and Architectural work activities.



## PROJECT WORK ACTIVITIES

The contracting work activities contains:

- Landscape planting.
- Hardscape paving and curbs.
- Concrete footings for the equipment.
- Concrete slab on grids under the interlock.
- High must lighting poles 17m.
- Lighting fixtures and electrical work.
- Irrigation network and plumbing work.
- Wooden benches, internal fence and trashes.
- Steel fence and entrance gates.
- Tensile tent with HDPE fabric.



## VALUE COMPANY

Our scope of work activities in this project was all the civil works and architectural finishing works by following the main designs in the IFC drawings and the exterior designs with its relevant design schemes and approved vendor lists by the client and the consultant.

Engineering and supervisor was one of our responsibilities and scope of work at site along with the co-ordination with the client and consultant from preparing the Architectural, Civil, Steel shop drawings until releasing the as built drawings and details in parallel with the submittals approvals from the project consultant. Also submittals of the used materials data sheets in MS formats by following the approved suppliers and vendors then preparing the method of statement and preparing all the delivered materials lists MIRs and finally preparing the finished and installed materials on site with the IRs through our site technical office with its specialized engineers by using the updated professional programs.

Project management and co-ordination was one of our scope of work including the cost control and project time schedule planning and contracting work at site through our site technical office with its specialized engineers by using the updated professional programs.



# PARTNERS IN SUCCESS

## PROJECT PARTIES



## PROJECT SUPPLERS & VENDORS



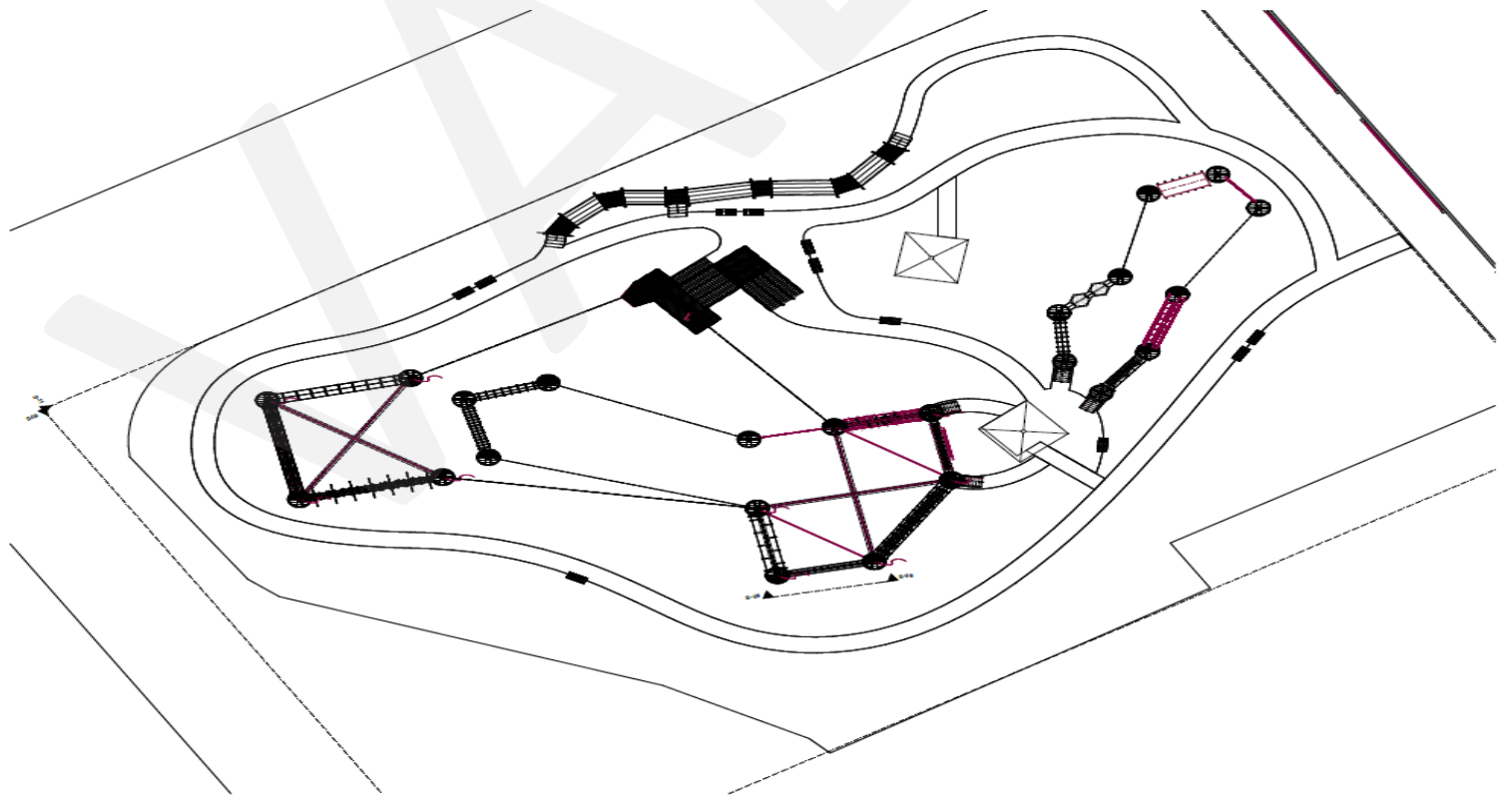


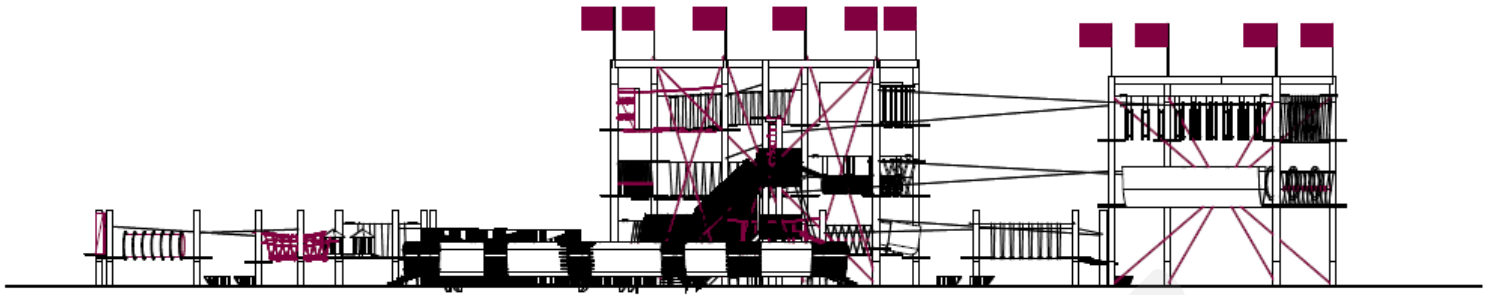
# REAL PHOTOS FROM THE PROJECT

Site Land Location Before Starting The Work



Engineering and Design Work

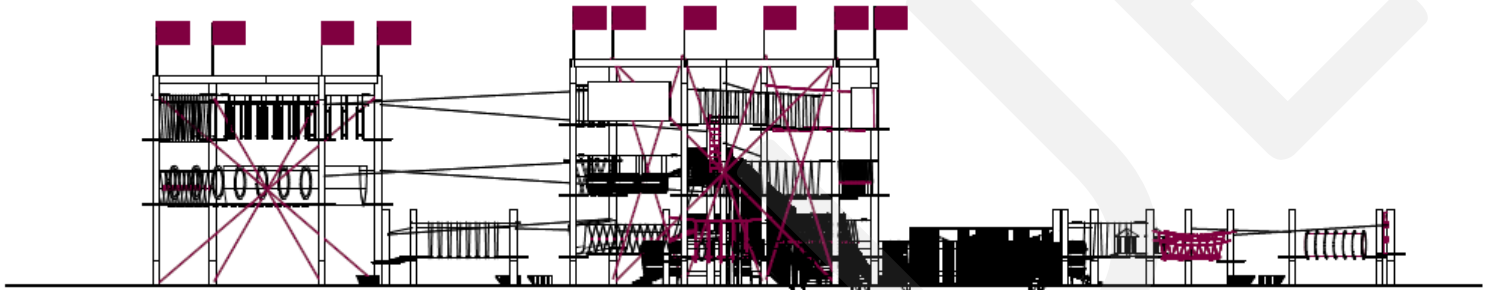




S-09

Park Section

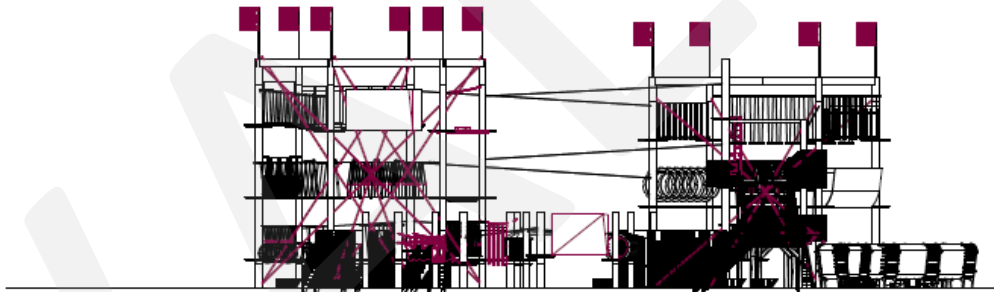
1:250



S-10

Park Section

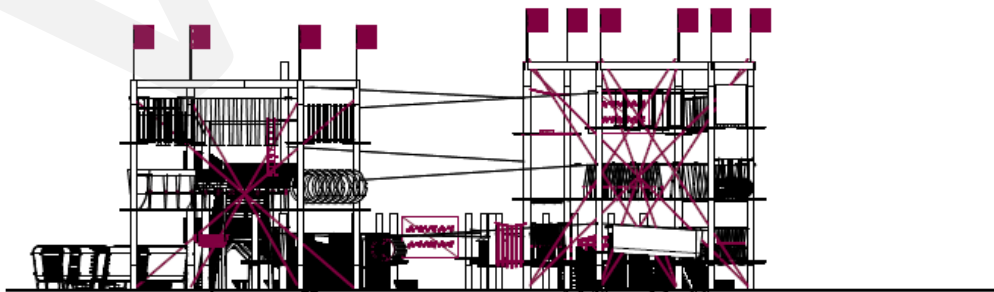
1:250



S-12

Park Section

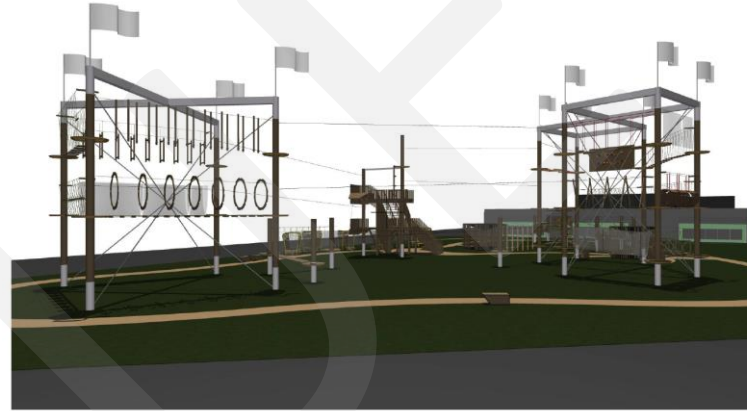
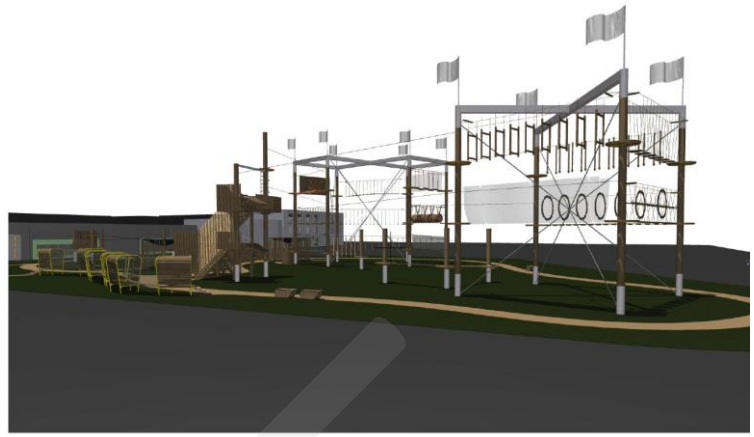
1:250



S-11

Park Section

1:250



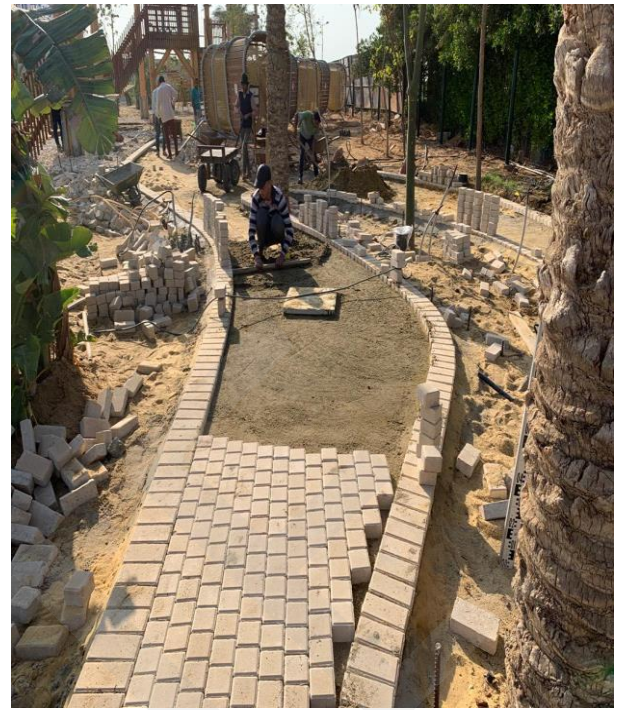
Stages of Construction Work Activities on Site

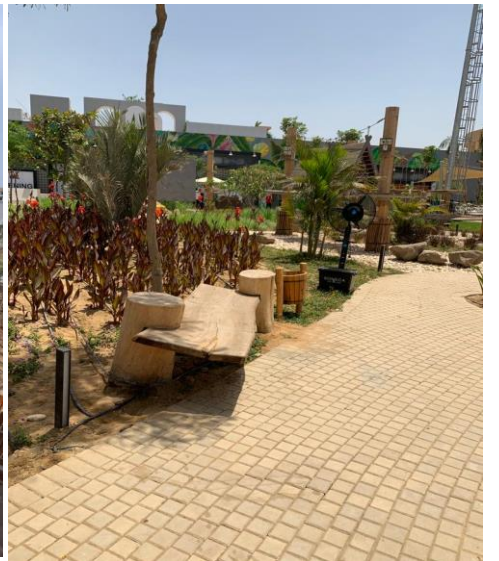


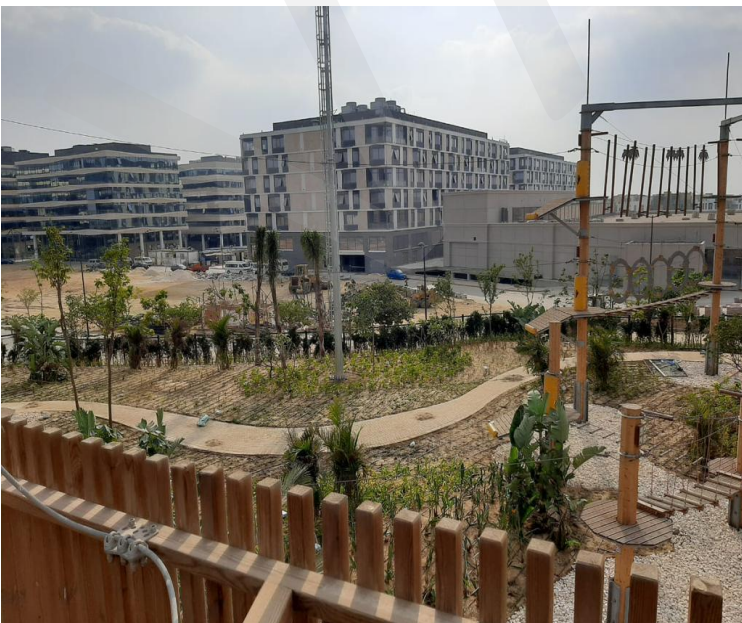


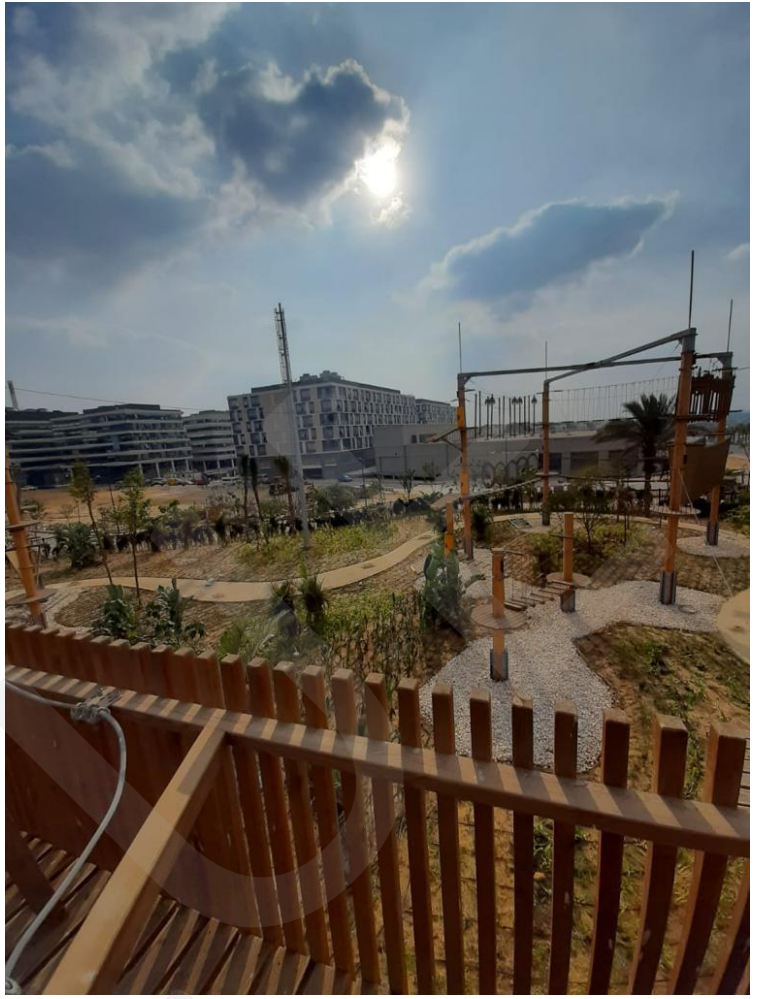










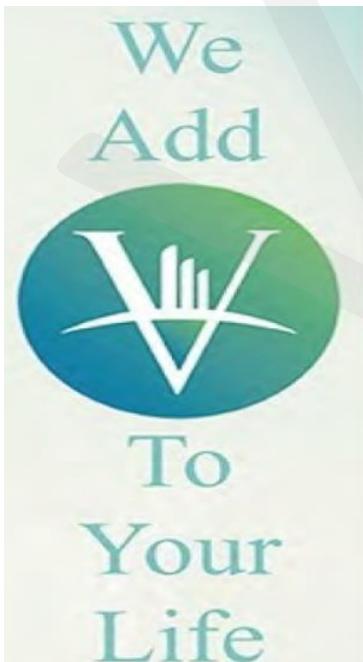




## FINALLY

VALUE company and all our management teams would like to thank all the engineers, supervisors and labors who participated in this project and specially we would like to thank:

- Eng. Yasser El Tagy – SODIC
- Eng. Ehab Amer – SODIC
- Eng. Ahmed El Ghandour – SODIC
- Eng. Kholud Adel – SODIC
- Eng. Mahmoud Swilam – SODIC
- Mr. Hany Amer – SODIC
- Dr. Mohamed Helmy – Horizon Consultant
- Dr. Madgy Ginidy – Horizon Consultant
- Eng. Ahmed Farouk – ACE Consultant
- Eng. Mohamed Saber – ACE Consultant
- Eng. Mohamed Daghash – Daghash Co.
- Mr. Virginijus Virbickas – UNO Park
- Mr. Martiens – UNO Park
- Eng. Zaher Galal – VALUE Co.
- Mr. Salah El Safiy – VALUE Co.
- Eng. Ahmed Madbouly – VALUE Co.
- Mr. Amr Ayman – VALUE Co.
- Eng. Karim Temraz – VALUE Co.
- Eng. Ahmed Emad – VALUE Co.
- Eng. Moahmed Ghonam – VALUE Co.
- Mr. Ghanim Fayad – VALUE Co.



**Thanks you**

Tel. : +2 02 23081661

Mob.: +2 01228376209

Mail : z.adian@valuemisr.com



# VALUE

Value for Investment and Real Estate Development  
Investment – Development – General Contracting – Procurement